

Tuan Luong

VBA Final Project:

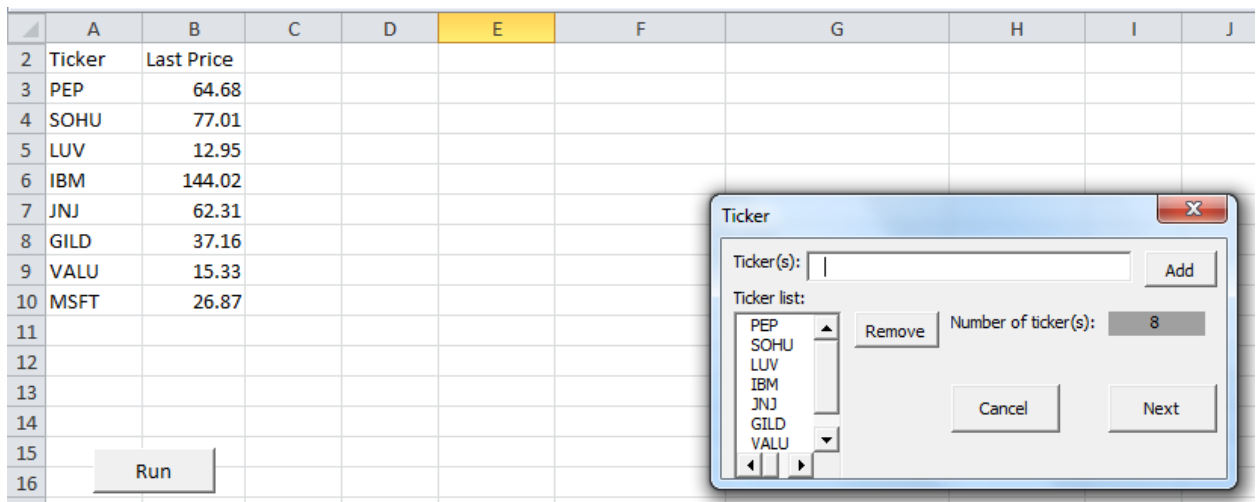
Bloomberg Report Via Userform

Executive Summary

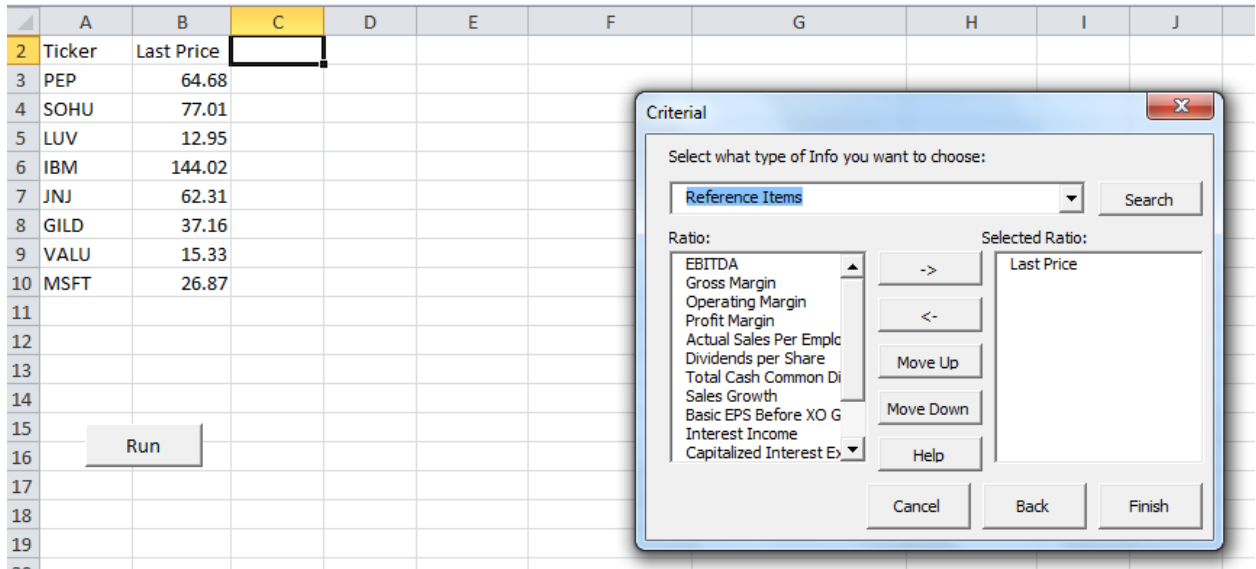
In Finance world, especially in investment, getting the most updated data in the fastest way is the key to earn a positive return. There are two professional program that help investors in this prospect which are: Bloomberg and Reuters. However, those two programs require skill and knowledge about the formula using in those systems to get the information and it takes time to be familiar with those formulas. Therefore, I built an excel VBA userform to simplify the interaction between user and Bloomberg, thus make Bloomberg easier to use.

Implementation Documents

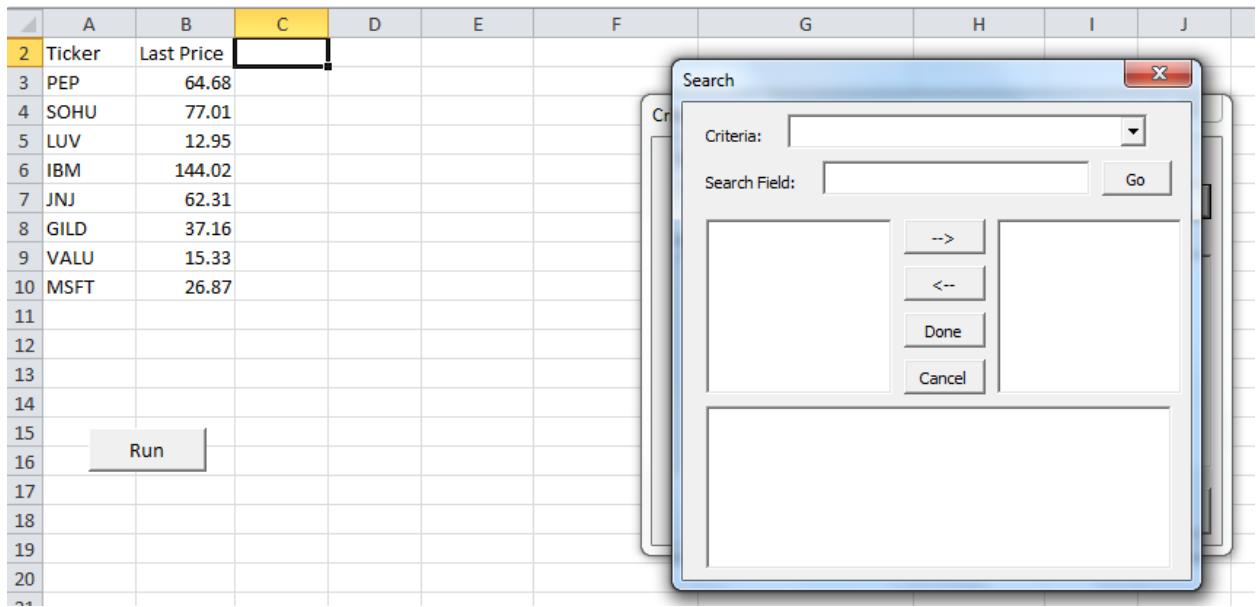
- First, when user opens the spread sheets, they can press Ctrl + Shift + B to open the user form or click on the button to run the userform.



- Ticker form:
 - o All current selected ticker are listed in ticker list.
 - o Type new tickers in Ticker(s) box, separated each ticker by comma.
 - o Click Add, the program to test the validity of each ticker and open a message box that tells us which ticker is invalid.
 - o Select a ticker and click remove to remove from the list.
 - o Click Next to move on the next part



- Criterial form which will let you to choose what information you want to put into the report
 - o When this form is opened, all the current information field will be listed under selected ratio so that when we want to rerun the report, we don't have to select each criterial again (Last Price is in the Selected Ratio 'cause it is in the current report)
 - o Click on the drop down menu to choose what type of info we want to choose. After choosing one type, all the field for that type will be listed under Ratio.
 - o Click -> to add field into the report or click <- to remove field out of the report.
 - o 'cause the order of the field in the report will be the same as the order under Selected Ratio, so we can use Move Up or Move Down to move field under selected ratio up or down to customize our report.
 - o If we not sure what does a field mean, we can select that field and click Help, a message box will show up with the definition of that field.
 - o If we have a field in mind but don't know where it lies, we can click on Search to search for that field.



- Search form will let us search for field we want
 - o We can type in name of field or select type of criteria and then type in field search to narrow down the result.
 (!!!): when you hit Go and an error box appear :” Can’t Find Project or Library”, Please click on tool -> reference to make sure no reference is missing (also make sure to open this one with BB terminal)
 - o The result will appear in the left side box. If we click on a result, the definition of that field will appear at the bottom box.
 - o Click -> to add criteria, <- to remove criteria, Done to finish the search.
- When we go back to Criteria Form, click Finish to run the report. Here is the example of the report:

	A	B	C	D	E	F	
2	Ticker	Last Price	Revenue	Selling, G	Gross Profit	Cash	
3	PEP	64.63	43232	15089	8506	3943	
4	SOHU	75.86	515.24	187.45	120.89	563.78	
5	LUV	12.82	10350	10088.00	#N/A	N.A.	1114
6	KO	64.39	30990	11671	5508	7021	
7	GILD	37.36	7011.38	1826.29	1460.07	1272.96	
8	IBM	144.98	95759	26772	11001	12183	
9							
10							
11							
12							
13							
14							
15							
16							
17							
18							
19							

Ctrl + Shift + B

What Did I Learn?

- My first problem is how to remote access log in to Bloomberg terminal. It took me three hours to try to write a program using WAIT and SENDKEYS, also trying SENDINPUTS using API. But all doesn't work. By talking with Pro. Alen, we found a simple solution for this problem: VCN.
- My other problem is when I try to directly input Bloomberg formula into the spreadsheet, it doesn't work because Bloomberg terminal doesn't run until the VBA finish running. Therefore, I use API (Application Programming Interface) to set up a connection between Bloomberg and Excel VBA. As the result, Bloomberg return the result in Array format which is easy to manipulate and put into final report.